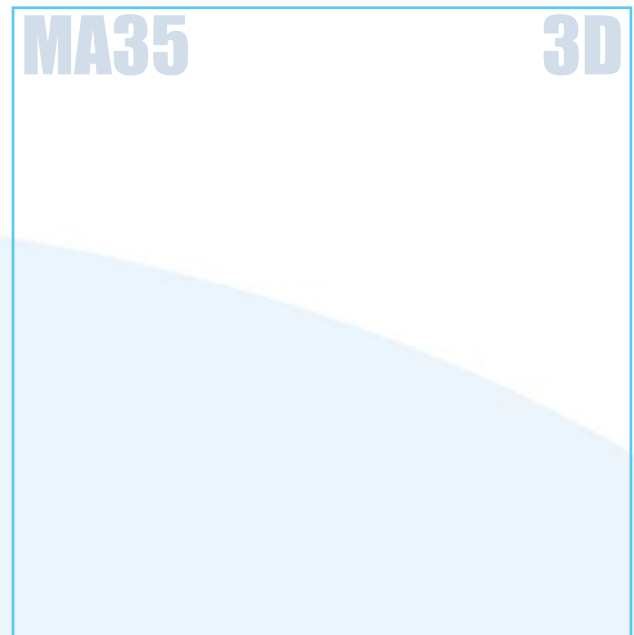
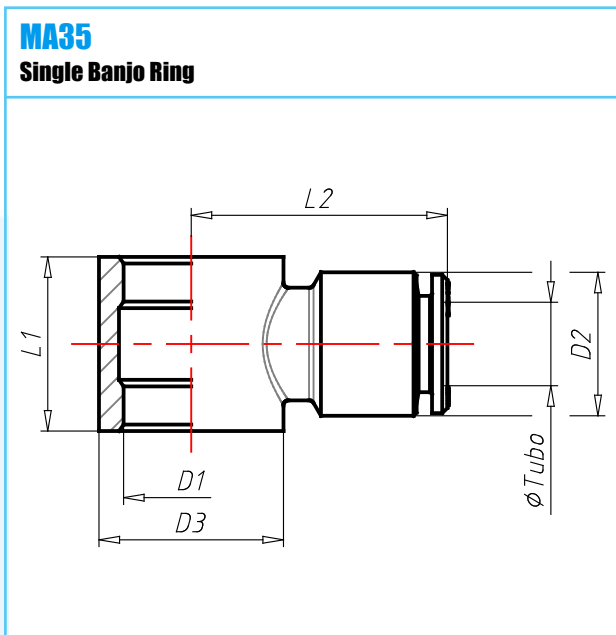


Material: Brass Nickel Plated
Working Temperature: -20 ÷ 80 C°
Working Temperature: -4 ÷ 176 F°
Working Pressure (max): 20 bar
Working Pressure (max): 290 psi
Vacuum: -99 kPa
Vacuum: 29" Hg
Conformity: Silicone Free

Conformity: RoHS
Conformity:
Conformity:
Conformity:
Application Pneumatic circuits



CODE	TYPE	DTUBO	D1	D2	D2IN	D3	D3IN	L1	L1IN	L2	L2IN	G	G0Z	WTF	WPP	TVH
A0250010	MA35 04 M5	4	M5	9.1	.358	10	.394	9	.354	18.5	.728	7.7	.272	-4 ÷ 176	290	29"
A0250011	MA35 04 18	4	1/8	9.1	.358	14	.551	15	.591	20.5	.807	13.5	.476	-4 ÷ 176	290	29"
A0250019	MA35 04 M5 /R	4	7	9.1	.358	10	.394	10	.394	18.5	.728	6.6	.233	-4 ÷ 176	290	29"
A0250030	MA35 06 M5	6	M5	12.0	.472	10	.394	9	.354	21.5	.846	10.9	.384	-4 ÷ 176	290	29"
A0250031	MA35 06 18	6	1/8	12.0	.472	14	.551	15	.591	22.5	.886	15.5	.547	-4 ÷ 176	290	29"
A0250032	MA35 06 14	6	1/4	12.0	.472	18	.709	17	.669	24.0	.945	21.6	.762	-4 ÷ 176	290	29"
A0250039	MA35 06 M5 /R	6	7	12.0	.472	10	.394	10	.394	21.5	.846	10.1	.356	-4 ÷ 176	290	29"
A0250041	MA35 08 18	8	1/8	14.0	.551	14	.551	15	.591	23.5	.925	16.7	.589	-4 ÷ 176	290	29"
A0250042	MA35 08 14	8	1/4	14.0	.551	18	.709	17	.669	24.5	.965	22.8	.804	-4 ÷ 176	290	29"
A0250043	MA35 08 38	8	3/8	14.0	.551	22	.866	20	.787	26.5	1.043	32.7	1.153	-4 ÷ 176	290	29"
A0250052	MA35 10 14	10	1/4	16.0	.630	18	.709	17	.669	27.0	1.063	27.2	.959	-4 ÷ 176	290	29"
A0250053	MA35 10 38	10	3/8	16.0	.630	22	.866	20	.787	29.0	1.142	34.5	1.217	-4 ÷ 176	290	29"
A0250063	MA35 12 38	12	3/8	19.0	.748	22	.866	20	.787	29.5	1.161	38.8	1.369	-4 ÷ 176	290	29"
A0250064	MA35 12 12	12	1/2	19.0	.748	26	1.024	24	.945	31.5	1.240	56.9	2.007	-4 ÷ 176	290	29"