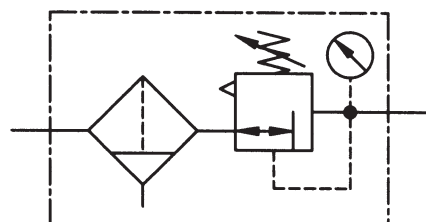


Technical data for series

FRKG



Order code

FRKG-14-10-5-1221

Options for digits No. 1 and 2

- 12*** = polycarbonate bowl ,
semi-automatic drain
13 = polycarbonate bowl,
auto drain

Options for digit No. 3

- 0** = without gauge
 flow from left to right
1 = without gauge
 flow from right to left
2* = **with gauge**
flow from left to right
3 = with gauge
 flow from right to left

Options for digit No. 4

- 1** = standard

Design and function

The filter/regulator is a diaphragm style regulator with relieving function. The filter includes a semi-automatic drain. The outlet pressure of the regulator remains constant regardless of incoming pressure changes. Once the desired pressure is achieved the adjusting knob can be fixed.

The filter removes both solid and liquid particles from the incoming air. The bowl can be supplied with a semi-automatic (drains when pressure is shut off) or auto drain.

The components of series K can easily be connected by using the coupling kit KPK-00.

For additional accessories see pages 11.032 and 11.033.

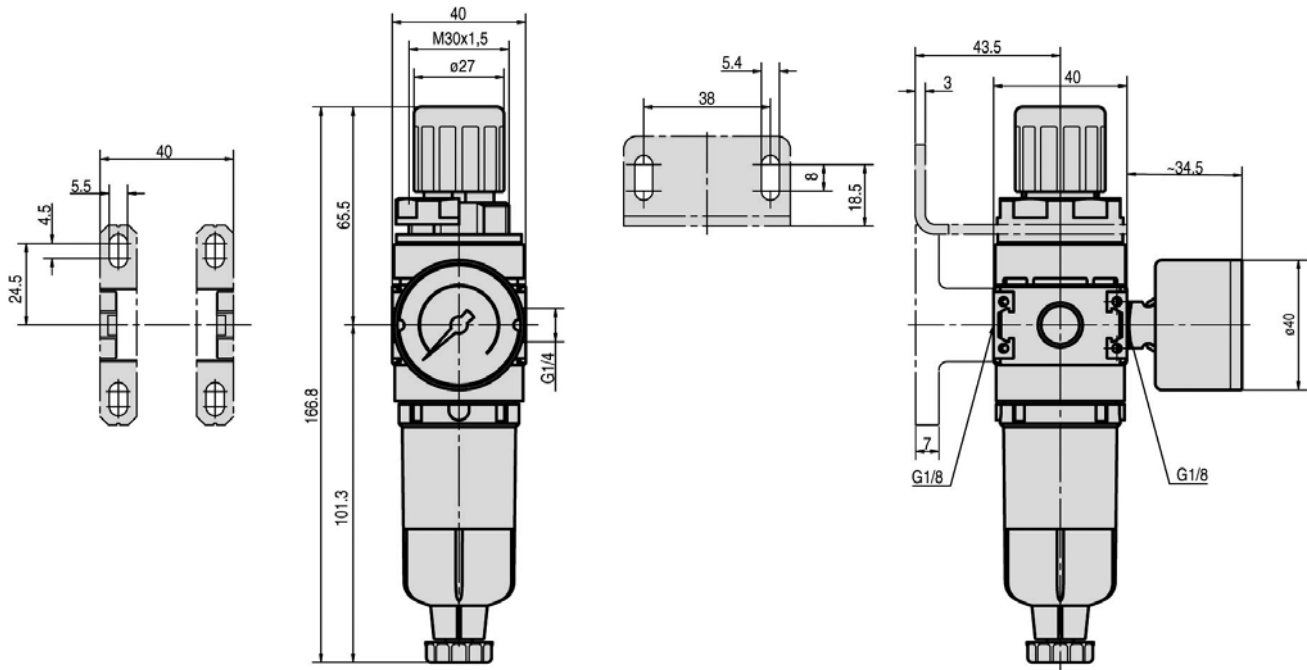
Order number	FRKG-14-03-5-1221	FRKG-14-06-5-1221	FRKG-14-10-5-1221*
Connection	G 1/4		
Mounting	vertically, drain plug at bottom		
Input range	max. 16 bar (10 bar with auto drain)		
Output range	0.1 ... 3 bar (1.5 ... 43 psi)	0.2 ... 6 bar (3 ... 87 psi)	0.5 ... 10 bar (7 ... 145 psi)
Filter element	5 µm		
Flow rate	890 NI/min. (0.904 Cv)		
Bowl volume	max. 16 cm³		
Temperature range	0 °C ... + 60 °C (+ 32 °F ... + 140 °F)		
Materials	Housing: Grivory (PA 66)		
Weight without pressure gauge*	0.250 kg (0.551 lb.)		

* = standard type

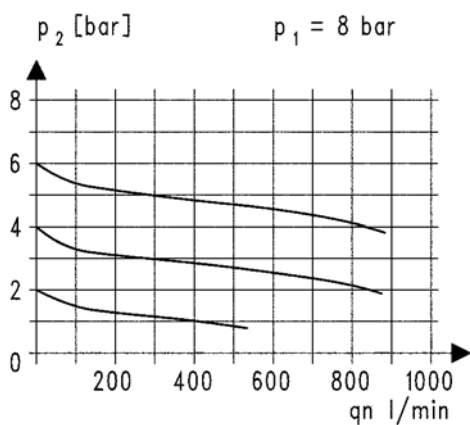
Dimensions for series

FRKG

FRKG-14



Flow characteristic FRKG-14



Pressure characteristic

