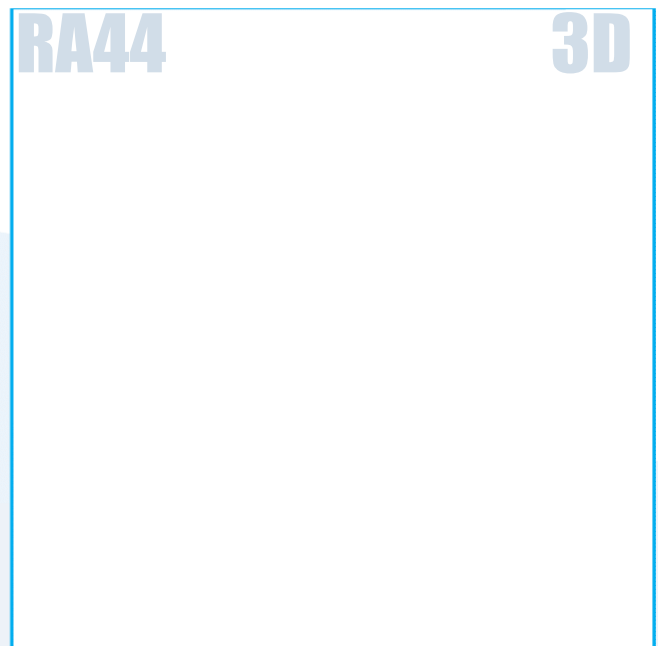
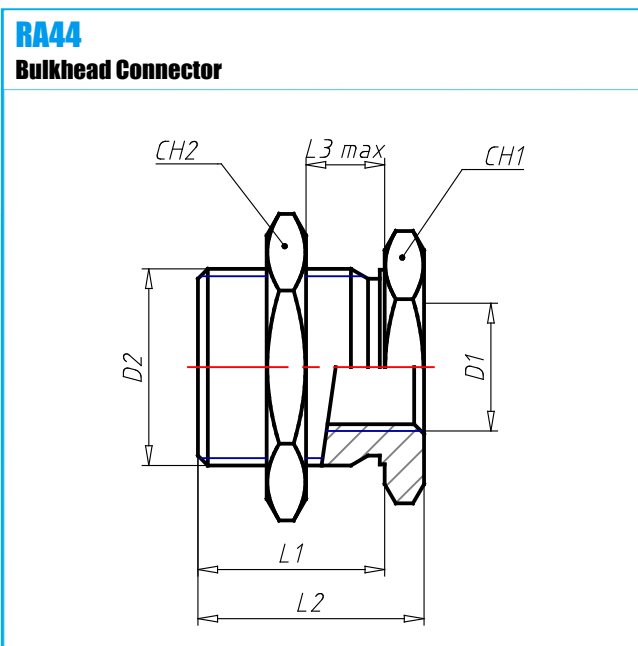


**Material:** Brass Nickel Plated  
**Working Temperature:** -20 ÷ 70 C°  
**Working Temperature:** F°  
**Working Pressure (max):** 60 bar  
**Working Pressure (max):** psi  
**Vacuum:** kPa  
**Vacuum:** Hg  
**Conformity:** RoHS

**Conformity:**  
**Conformity:**  
**Conformity:**  
**Conformity:**  
**Application** Pneumatic, hydraulic and oleodynamic circuits



CODE	TYPE	D1	D2	L1	L2	L3	CH1	CH2	G
05340000	RA44 00 M5	M5x0,5	M10x1	9.5	13	6	14	14	12
05340001	RA44 00 18	G1/8	M16x1,5	15.0	19	10	19	22	29
05340002	RA44 00 14	G1/4	M20x1,5	19.0	23	14	24	27	48
05340003	RA44 00 38	G3/8	M26x1,5	22.0	27	16	30	32	91
05340004	RA44 00 12	G1/2	M28x1,5	28.0	34	21	32	36	112