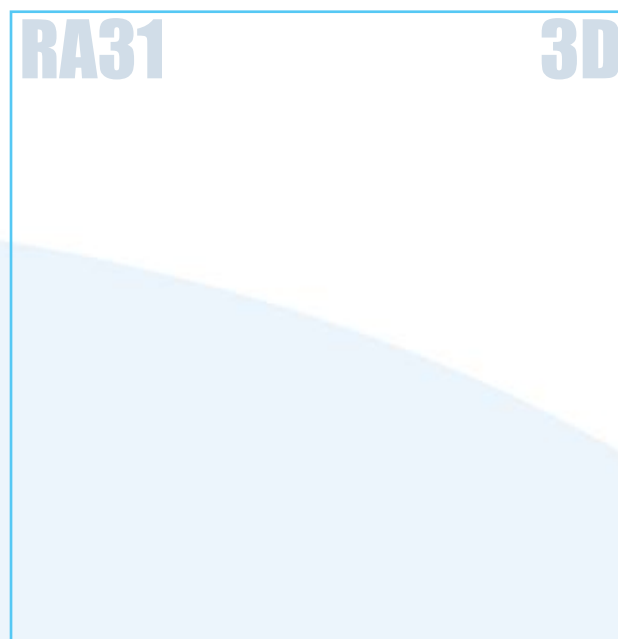
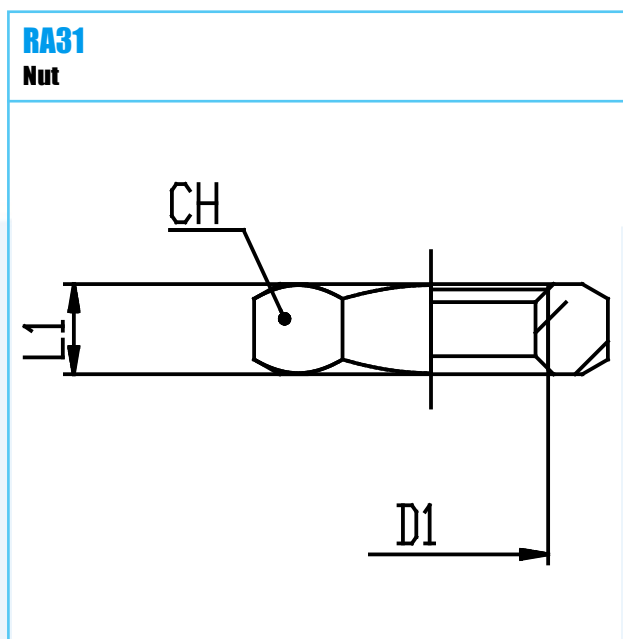


Material: Brass Nickel Plated
Working Temperature: -40 ÷ 150 C°
Working Temperature: -40 ÷ 302 F°
Working Pressure (max): 60 bar
Working Pressure (max): 870 psi
Vacuum: kPa
Vacuum: Hg
Conformity: RoHS

Conformity:
Conformity:
Conformity:
Conformity:
Application Pneumatic, hydraulic and oleodynamic circuits



CODE	TYPE	D1	L1	L1IN	CH	G	OZ	WTF	WPP
5210001	RA31 00 18	G1/8	4.5	.177	14	4.0	.141	-40 ÷ 302	870
5210002	RA31 00 14	G1/4	5.0	.197	17	5.0	.176	-40 ÷ 302	870
5210003	RA31 00 38	G3/8	5.5	.217	19	5.0	.176	-40 ÷ 302	870
5210004	RA31 00 12	G1/2	6.0	.236	24	8.0	.282	-40 ÷ 302	870
5210600	RA31 00 M10x1	M10x1	4.0	.157	14	3.0	.106	-40 ÷ 302	870
5210700	RA31 00 M12x1	M12x1	5.0	.197	16	5.0	.176	-40 ÷ 302	870
05210800	RA31 00 M14x1	M14x1	5.0	.197	18	5.5	.194	-40 ÷ 302	870
05210M00	RA31 00 M16x1	M16x1	5.0	.197	20	6.0	.212	-40 ÷ 302	870
05210N00	RA31 00 M20x1,5	M20x1,5	4.0	.157	27	10.5	.370	-40 ÷ 302	870